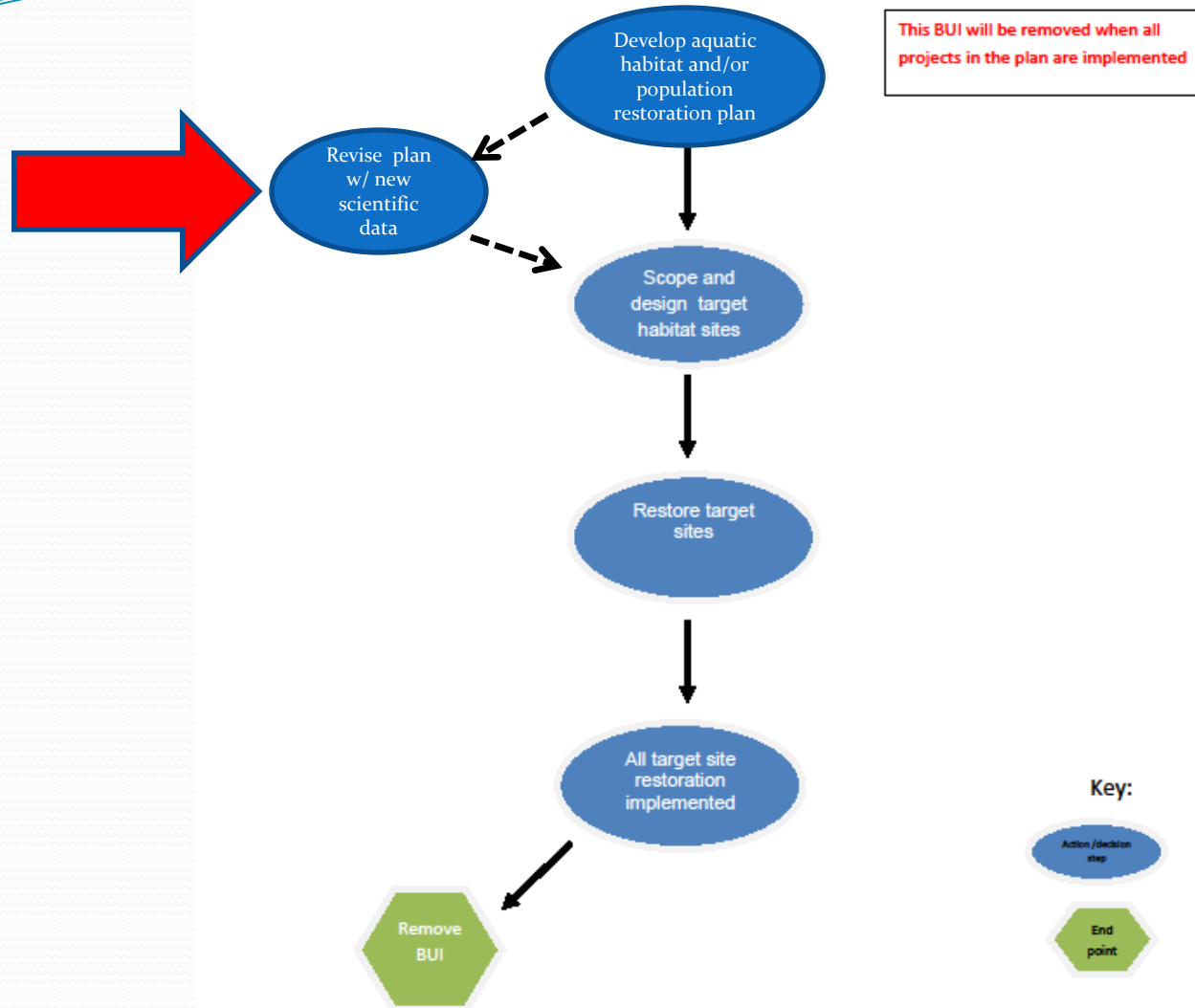


# Detroit River RAP BUI Pathways Mapping Process

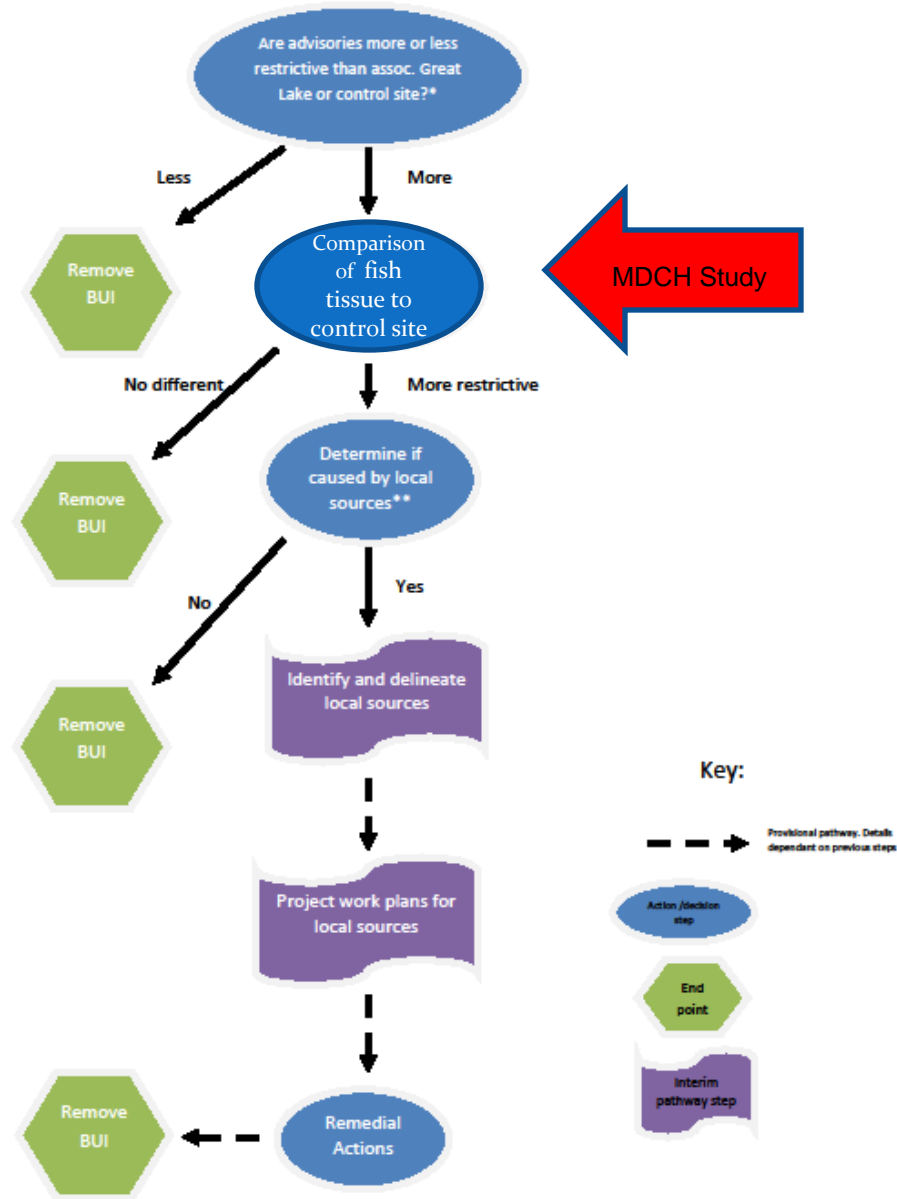
June 2013 Revision

# Loss of Fish and Wildlife Habitat/Degradation of Fish and Wildlife Populations



\*2008 MDEQ Delisting Criteria: [http://www.michigan.gov/documents/deq/wb-aoc-delistguide\\_247421\\_7.pdf](http://www.michigan.gov/documents/deq/wb-aoc-delistguide_247421_7.pdf)

## Step-wise pathway to removal of Restrictions on Fish and Wildlife Consumption BUI

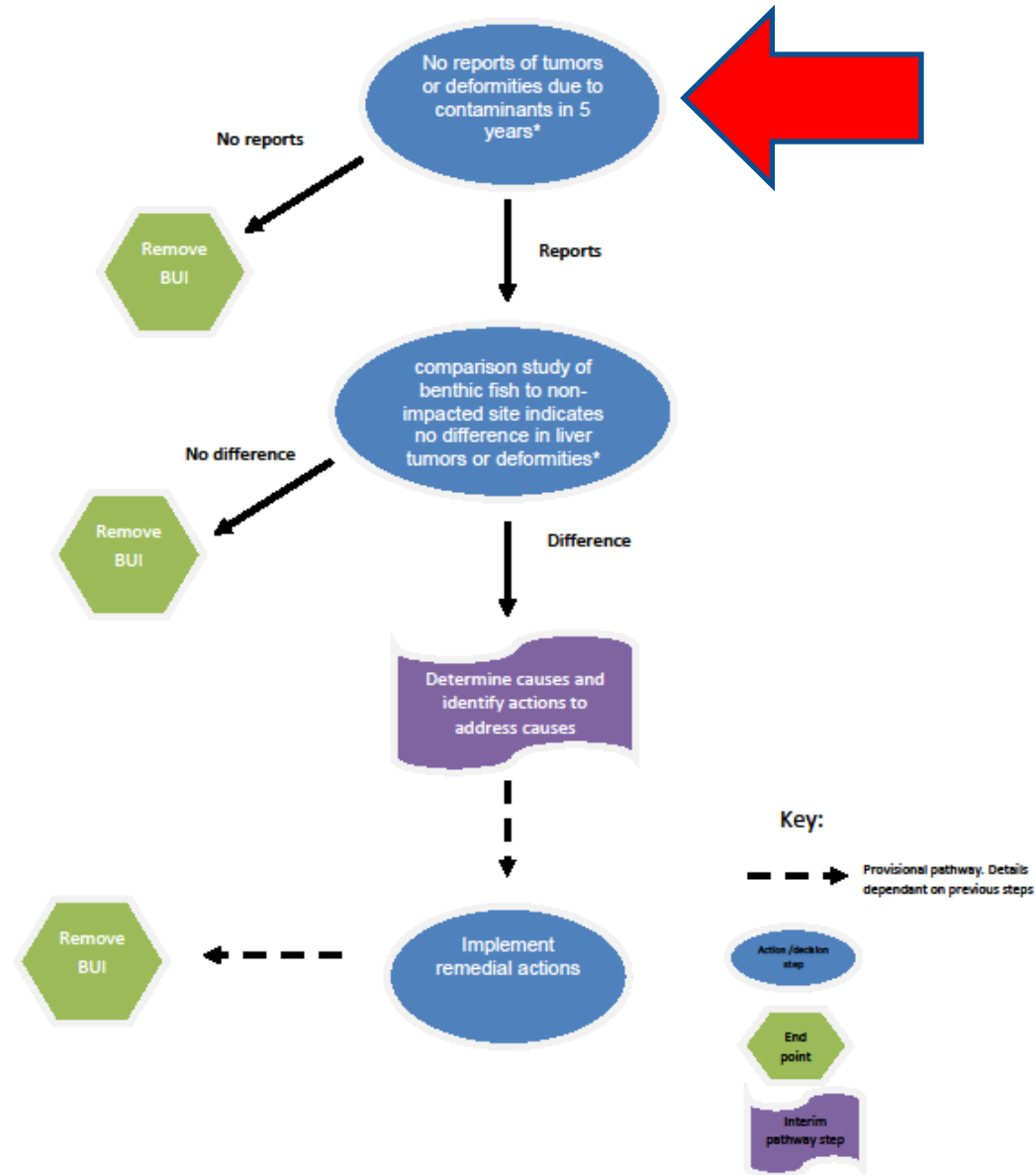


\*2008 MDEQ Delisting Criteria: [http://www.michigan.gov/documents/deq/wb-soc-delistguide\\_247421\\_7.pdf](http://www.michigan.gov/documents/deq/wb-soc-delistguide_247421_7.pdf)

\*\*1991 from IJC Delisting Criteria <http://www.ijc.org/re/focus/listdelist/lidemain.html#use01>

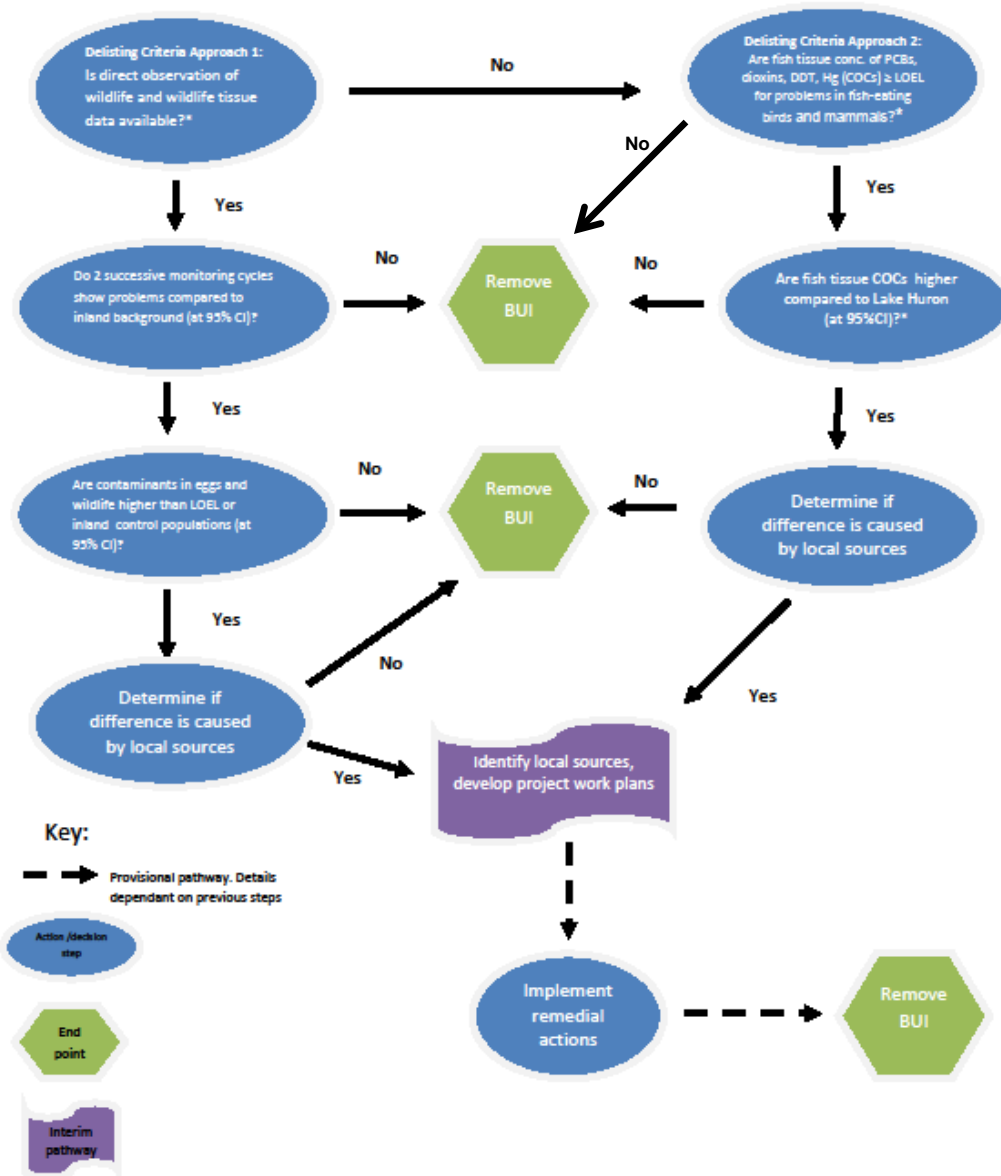
# Step-wise pathway for removal of Fish Tumors and other Deformities

## BUI



\*2008 MDEQ Delisting Criteria; [http://www.michigan.gov/documents/deq/wb-roc-delistguide\\_247421\\_7.pdf](http://www.michigan.gov/documents/deq/wb-roc-delistguide_247421_7.pdf)

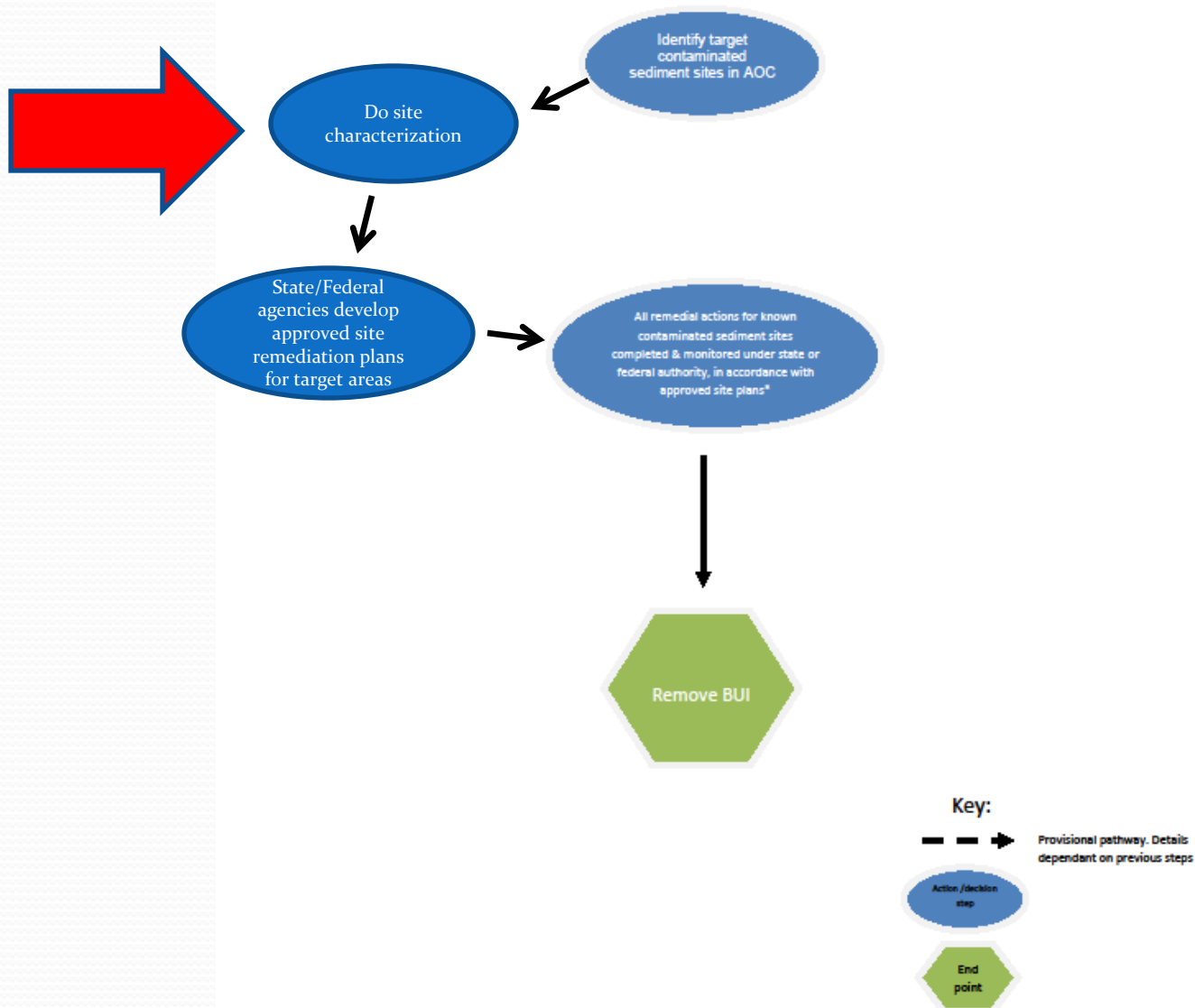
## Step-wise pathway for removal of Bird or Animal Deformities or Reproductive Problems BUI



Per Statewide assessment

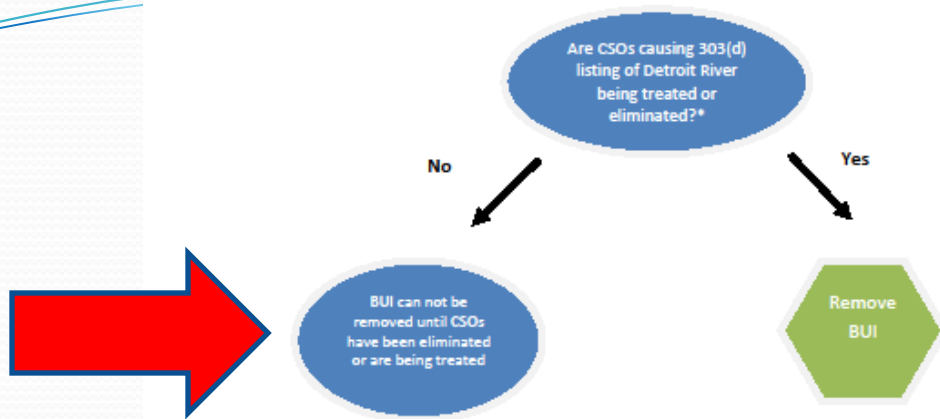
\* 2008 MDEQ Delisting Criteria: [http://www.michigan.gov/documents/deq/wb-soc-delistguide\\_247421\\_7.pdf](http://www.michigan.gov/documents/deq/wb-soc-delistguide_247421_7.pdf) Also, preferred criteria option by FDR, 2008.

# Step-wise pathway to removal of Degradation of Benthos BUI in non-wadeable waters



\*2008 MDEQ Delisting Criteria: [http://www.michigan.gov/documents/deq/wb-aoc-delistguide\\_247421\\_7.pdf](http://www.michigan.gov/documents/deq/wb-aoc-delistguide_247421_7.pdf)

## Step-wise pathway for removal of Beach Closings

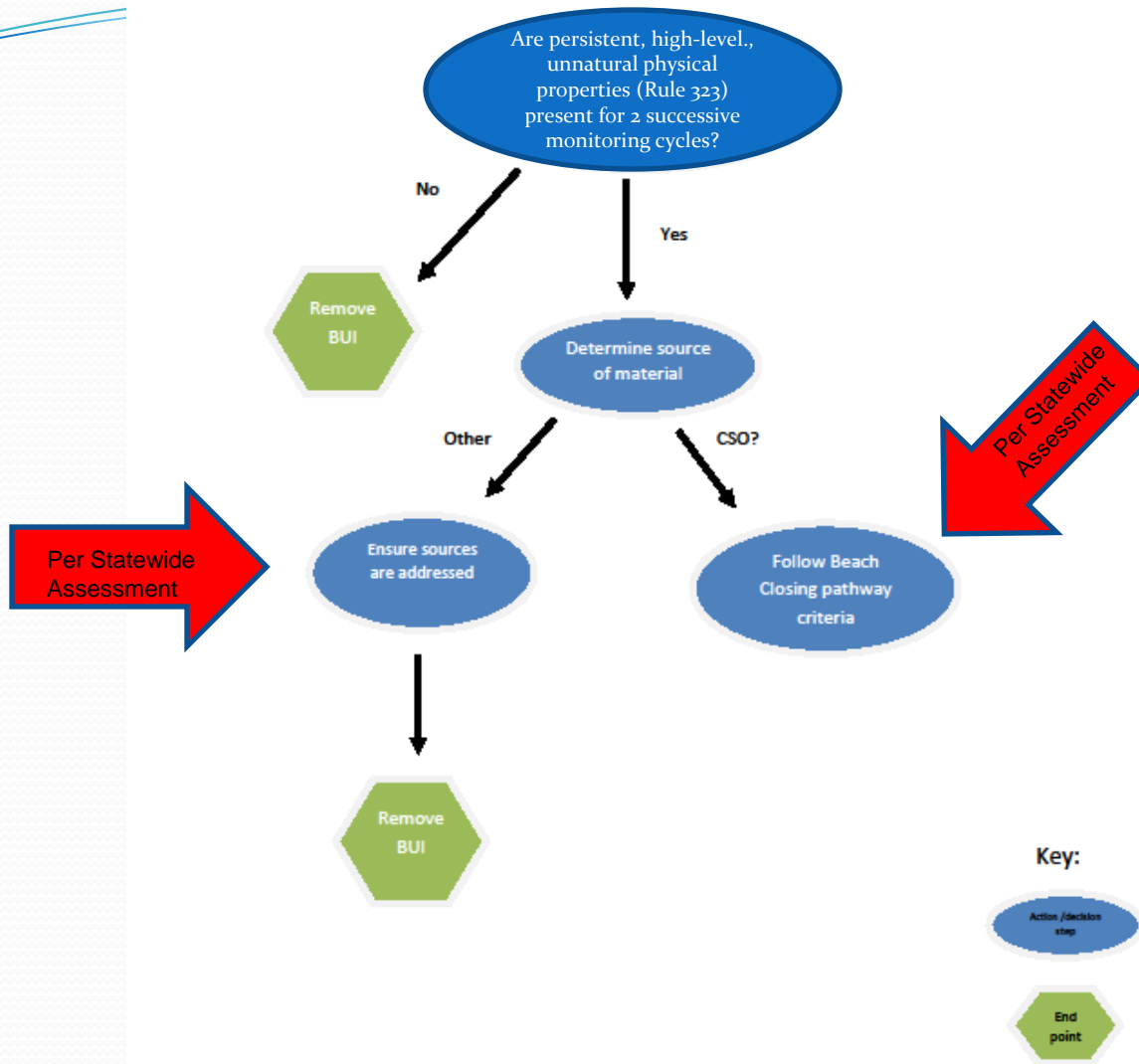


### Key:



\*2008 MDEQ Delisting Criteria; [http://www.michigan.gov/documents/deq/wb-aoc-delistguide\\_247421\\_7.pdf](http://www.michigan.gov/documents/deq/wb-aoc-delistguide_247421_7.pdf)

# Step-wise pathway for removal of Aesthetics



\*2008 MDEQ Delisting Criteria: [http://www.michigan.gov/documents/deq/wb-soc-delistguide\\_247421\\_7.pdf](http://www.michigan.gov/documents/deq/wb-soc-delistguide_247421_7.pdf)